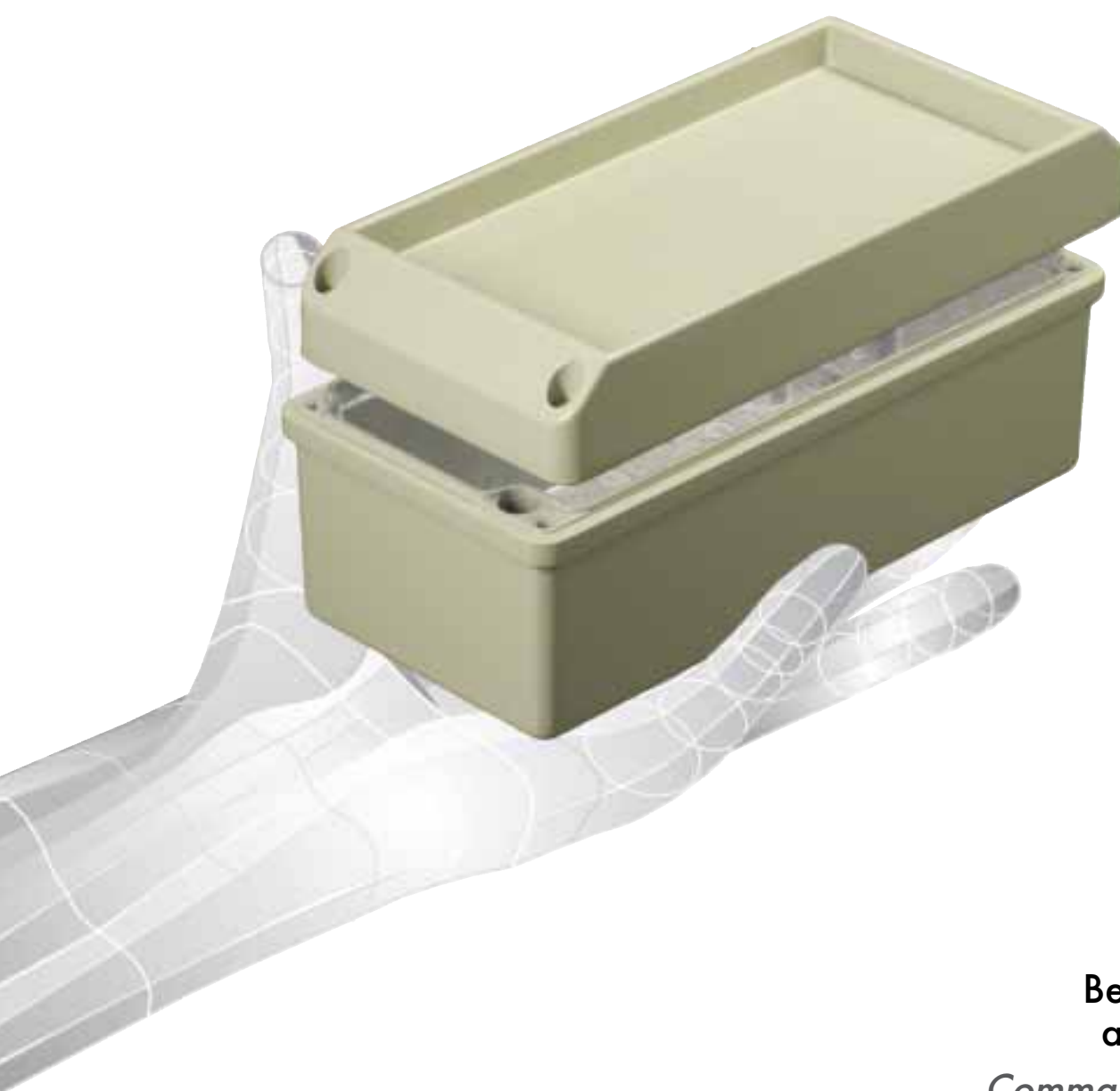


conTROL



**Befehlsgehäuse
aus Aluminium**

*Command enclosures
made of aluminium*

**Commandobehuizingen van
aluminium**

Kragen schützt Befehls- und Informationstasten

Hohe Abschirmung von Störstrahlen

Schutzart IP 66, optional IP 67

Reichhaltiges Zubehör

Protection wall for buttons

High shielding from radio interferences

Ingress protection IP 66, IP 67 on request

Wide variety of accessories

Kraag beschermt commando- en informatietoetsen

Hoge afscherming van stoorstraling

Beschermklasse IP 66, indien gewenst IP 67

Grote keuze aan toebehoren

TECHNISCHE DATEN **control**

Gehäuse

Aluminiumguss Legierung: EN AC-44300 DIN EN 1706 (GD Al Si 12/DIN 1725). Entformungsschräge 1° → Lichte Innenmaße reduzieren sich bis zum Gehäuseboden um 1° umlaufend.

Schrauben

Deckelschrauben aus Edelstahl 1.4567, unverlierbar.

Schutzart

IP 66 / 67 EN 60529

Dichtung

TPE-Formdichtung, silikonfrei, Temperaturbeständigkeit -40°C bis +120°C, optional: Silikon-Dichtung (-50°C bis +140°C).

Temperaturbeständigkeit
-40°C bis +120°C

Befestigung

Separate Schraubenkanäle außerhalb des Dichtraumes Schaltafeleinbau mittels Einbau-Montagesatz.

Einbauten

Befestigungsmöglichkeiten M4/M6 im Ober- und Unterteil zum Einbau u.a. von Leiterkarten und Montageplatten.

Oberfläche

Pulverlackierung
Kieselgrau RAL 7032
Optional: Sonderfarben.

TECHNICAL DATA **control**

Enclosure

Die-cast aluminium: EN AC-44300 DIN EN 1706 (GD Al Si 12/DIN 1725). 1° mould slope for casting ejection → Internal measures diminishing circulatory towards enclosure bottom by 1°.

Lid-screws

Captive screws made of stainless steel 1.4567.

Ingress protection
IP 66 / 67 EN 60529

Gasket

TPE gasket, siliconefree, temperature range -40°C up to +120°C, silicon-gasket (-50°C up to +140°C) on request.

Temperature range
-40°C up to +120°C

Fastening

Separate channel system outside the interior. Panel mounting with installation set.

Internal mounting

Mounting points M4/M6 within the enclosure bottom and in the lid to be used for the mounting of PCB supports or mounting plates.

Coating

Powder coated
Silky grey RAL 7032, special colours on request.

TECHNISCHE GEGEVENS **control**

Behuizing

Gietaluminiumlegering: EN AC-44300 DIN EN 1706 (GD Al Si 12/DIN 1725). Afschuining 1° → binnenwerkse maten reduceren zich rondom tot de behuizingbodemp met 1°.

Dekselbouten

Dekselbouten van roestvrij staal 1.4567, niet verliesbaar.

Beschermklasse

IP 66 / 67 EN 60529

Afdichting

TPE vormafdichting, vrij van silicone, temperatuurbestendigheid -40°C tot +120°C. Op aanvraag silicone afdichting (-50° tot +140°C).

Temperatuurbestendigheid
-40°C tot +120°C

Bevestiging

Afzonderlijke schroefkanalen buiten de afgedichte ruimte. Inbouw van het bedieningspaneel met behulp van een inbouwmontageset.

Inbouw

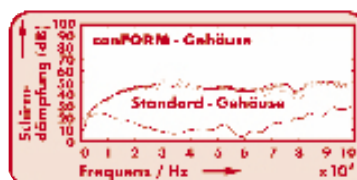
Bevestigingspunten M4/M6 in het onderste gedeelte van de behuizing als in het deksel voor de inbouw van printplaten of montageplaten.

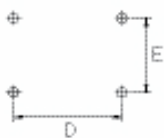
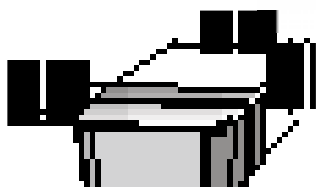
Lakken

Gemoffeld.
Kiezelgrijs RAL 7032, speciale kleuren op aanvraag.



Störstrahlungsprüfung von ROLEC EMV-Gehäusen zu handelsüblichen Standardgehäusen





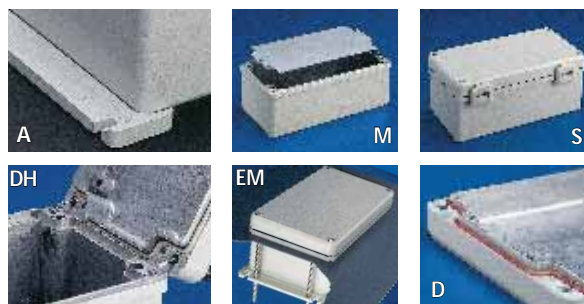
Montagemaß
 Mounting dimensions
 Montageafmetingen

Lieferübersicht - Range overview - Overzichtstabel leveringen

| Type | MAT-NR. | L | W | H | D | E | g | | | | | | | | | | |
|----------|-------------|-------|------|------|-----|----|-----|---|---|---|---|---|---|----|----|-----|------|
| Type | MAT-NR. | L | W | H | D | E | g | M | D | A | L | T | S | EM | DH | EMV | Plus |
| EKTF 082 | 311.082.000 | 129,8 | 84,8 | 55,0 | 113 | 52 | 450 | ● | ● | ● | ● | ● | ● | ● | ○ | □ | ● |
| EKTF 083 | 311.083.000 | 179,8 | 84,8 | 55,0 | 163 | 52 | 600 | ● | ● | ● | ● | ● | ● | ● | ○ | □ | ● |
| EKT 082 | 310.082.000 | 129,8 | 84,8 | 78,0 | 113 | 52 | 600 | ● | ● | ● | ● | ● | ● | ● | ● | □ | ● |
| EKT 083 | 310.083.000 | 179,8 | 84,8 | 78,0 | 163 | 52 | 750 | ● | ● | ● | ● | ● | ● | ● | ● | □ | ● |

- M** Montageplatten
 Mounting plates
 Montageplaten
- D** Silicon Deckeldichtung
 Silicon enclosure gasket
 Silicone dekselafdichting
- A** Außenbefestigungslaschen
 External mounting brackets
 Buitenbevestigingsstrippen
- L** Korrosionsschutzlackierung
 Corrosion proof coating
 Anticorrosielak
- EMV** Abschirmung
 Shielding
 Afscherming
- PLUS** Schutzart IP 67
 Protection class IP 67
 Beschermklasse IP 67

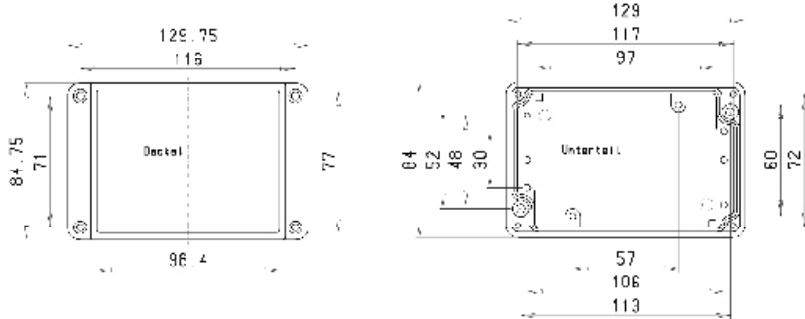
- T** Tragschienen für Reihenklemmen
 Supporting rail for series terminals
 Draagrail voor serieklemmen
- S** Scharniere
 Hinges
 Scharnieren
- EM** Einbaumontagesatz
 Installation kit
 Inbouwmontageset
- DH** Deckelhalterungen
 Lidholders
 Dekselhouder



□ Standard/Standard/standaard
 ● Lieferbar/available/leverbaar ○ Nicht lieferbar/not available/niet-leverbaar

BESTELLBEISPIEL ORDER EXAMPLE/BESTELVOORBEELD Type: EKT 083 + D + A + etc.

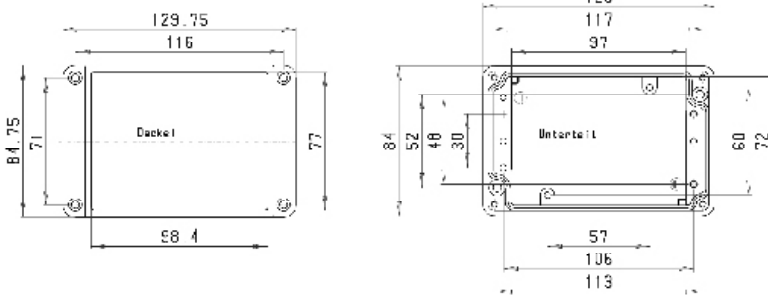
EKTF 082



M Kabelverschraubungen
a Cable glands
x Kabelwartel

| A | | A/B | C/D |
|------|---------|-----|-----|
| C | D | | |
| B | PG 7 | 3 | 1 |
| M 16 | PG 9 | 2 | 1 |
| | PG 11 | 2 | |
| M 20 | PG 13,5 | 1 | |
| | PG 16 | 1 | |
| M 25 | PG 21 | | |
| M 32 | PG 29 | | |
| M 40 | PG 36 | | |
| M 50 | PG 42 | | |
| M 63 | PG 48 | | |

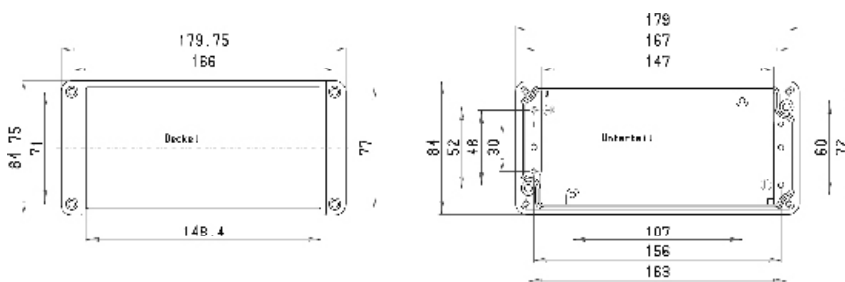
EKT 082



M Kabelverschraubungen
a Cable glands
x Kabelwartel

| A | | A/B | C/D |
|------|---------|-----|-----|
| C | D | | |
| B | PG 7 | 6 | 2 |
| M 16 | PG 9 | 5 | 2 |
| | PG 11 | 4 | 1 |
| M 20 | PG 13,5 | 3 | 1 |
| | PG 16 | 3 | 1 |
| M 25 | PG 21 | | |
| M 32 | PG 29 | | |
| M 40 | PG 36 | | |
| M 50 | PG 42 | | |
| M 63 | PG 48 | | |

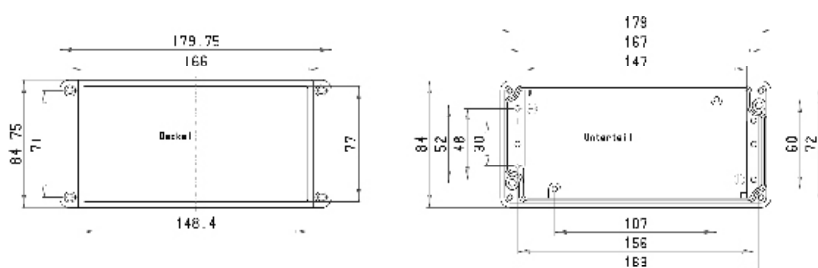
EKTF 083



M Kabelverschraubungen
a Cable glands
x Kabelwartel

| A | | A/B | C/D |
|------|---------|-----|-----|
| C | D | | |
| B | PG 7 | 4 | 1 |
| M 16 | PG 9 | 4 | 1 |
| | PG 11 | 3 | |
| M 20 | PG 13,5 | 2 | |
| | PG 16 | 2 | |
| M 25 | PG 21 | | |
| M 32 | PG 29 | | |
| M 40 | PG 36 | | |
| M 50 | PG 42 | | |
| M 63 | PG 48 | | |

EKT 083



M Kabelverschraubungen
a Cable glands
x Kabelwartel

| A | | A/B | C/D |
|------|---------|-----|-----|
| C | D | | |
| B | PG 7 | 9 | 2 |
| M 16 | PG 9 | 8 | 2 |
| | PG 11 | 6 | 1 |
| M 20 | PG 13,5 | 5 | 1 |
| | PG 16 | 4 | 1 |
| M 25 | PG 21 | | |
| M 32 | PG 29 | | |
| M 40 | PG 36 | | |
| M 50 | PG 42 | | |
| M 63 | PG 48 | | |