



Our *passion* is enclosures.



# polyKOM

Standard enclosures made of glass fibre reinforced polyester

# Technical data

## polyKOM



Compatible with conventional brands



Hinge



External mounting feet V2A



Hold hinge



Hexagon socket lid screws



Mounting rail and terminals



Mounting plate

**Enclosure:** Polyester glass fibre reinforced, halogen-free  
1° mould slope for casting ejection, internal measures diminishing  
circulatory towards enclosure bottom by 1°.

**Components:** Mounting webs with M4/M6  
threaded bushing in the enclosure bottom.

**Fastening:** Separate screw channels outside of the  
enclosure interior

**Flammability:** UL 94 V-0, self-extinguishing

**Ingress Protection:** IP65 / EN 60529

**Gasket:** Chloroprene (CR) gasket (-30°C to +90°C)

**Captive screws:** Stainless steel 1.4567 (V2A), captive

**Surface:** RAL 7000, squirrel grey, surface resistance > 10<sup>9</sup> Ω

### Optionally available:

**External mounting feet:** Stainless steel 1.4301 (V2A)

**Mounting plates:** Sheet steel, galvanised

**Gasket:** Silicone gasket (-50°C to +140°C)

**Surface:** RAL 9005, deep black, surface resistance < 10<sup>9</sup> Ω

**Further options, see delivery overview.**

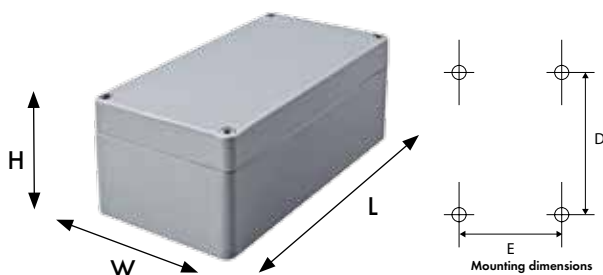
Delivery overview polyKOM														
Type	Mat. no.	L	W	H	D	E	g	A	S	HS	IN	M	D	T
PK 081	180.081.000	80	75	55	68	45	230	○	○	○	○	●	●	●
PKH 081	182.081.000	80	75	75	68	45	300	○	○	○	○	●	●	●
PK 082	180.082.000	110	75	55	98	45	295	○	○	○	○	●	●	●
PK 083	180.083.000	160	75	55	148	45	405	○	○	○	○	●	●	●
PK 084	180.084.000	190	75	55	178	45	450	○	○	○	○	●	●	●
PK 121	180.121.000	122	120	90	106	82	750	●	●	●	●	●	●	●
PK 123	180.123.000	220	120	90	204	82	1.060	●	●	●	●	●	●	●
PK 161	180.161.000	160	160	90	140	110	1.130	●	●	●	●	●	●	●
PK 162	180.162.000	260	160	90	240	110	1.710	●	●	●	●	●	●	●
PK 163	180.163.000	360	160	90	340	110	2.150	●	●	●	●	●	●	●
PK 164	180.164.000	560	160	90	540	110	3.185	●	●	●	●	●	●	●
PK 251	180.251.000	255	250	120	235	200	2.650	●	●	●	●	●	●	●
PK 252	180.252.000	400	250	120	380	200	3.650	●	●	●	●	●	●	●
PK 254	180.254.000	600	250	120	580	200	5.235	●	●	●	●	●	●	●
PK 411	180.411.000	400	405	120	380	355	5.580	●	●	●	●	●	●	●

□ Standard ● Available ○ Not available

Approvals:



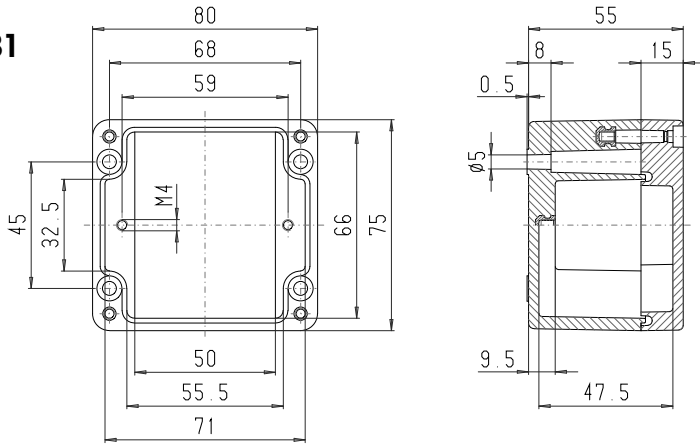
Extended approvals:



# ROLEC Attachment and mounting dimensions

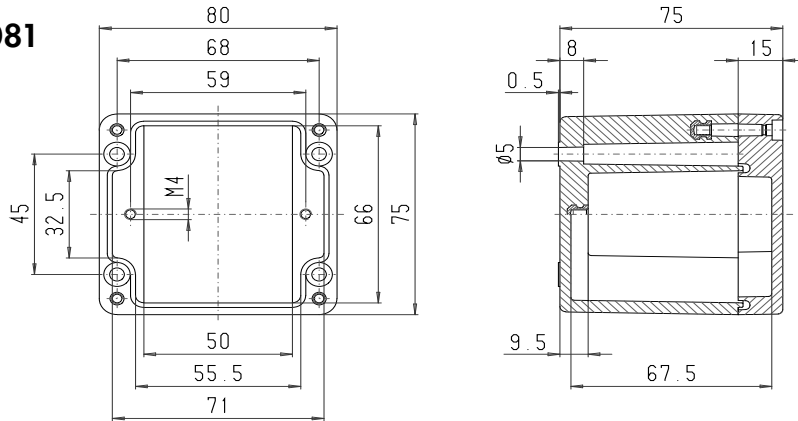
## polyKOM

**PK 081**



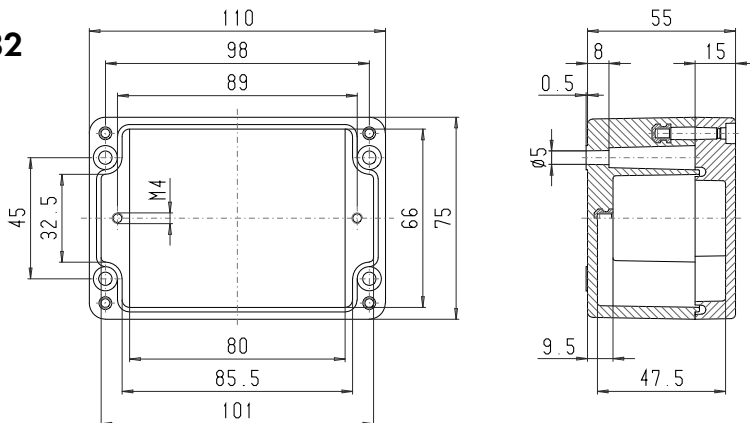
Maximum number of cable glands per enclosure side					
C	A		A/B/C/D		
	B	D			
			PG 7	5	2
M 16			PG 9	3	1
			PG 11	2	1
M 20			PG 13,5	2	1
			PG 16	2	1
M 25			PG 21	1	
M 32			PG 29		
M 40			PG 36		
M 50			PG 42		
M 63			PG 48		

**PKH 081**



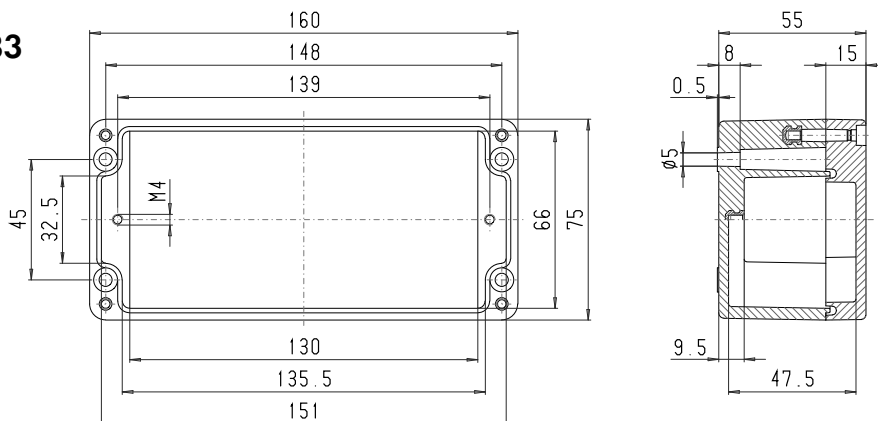
Maximum number of cable glands per enclosure side					
C	A		A/B/C/D		
	B	D			
			PG 7	6	4
M 16			PG 9	6	2
			PG 11	4	2
M 20			PG 13,5	4	2
			PG 16	3	1
M 25			PG 21	1	1
M 32			PG 29	1	
M 40			PG 36		
M 50			PG 42		
M 63			PG 48		

**PK 082**



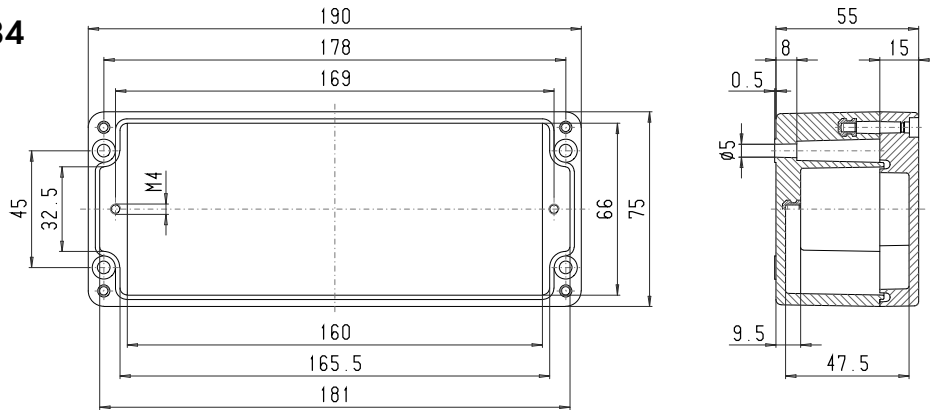
Maximum number of cable glands per enclosure side					
C	A		A/B/C/D		
	B	D			
			PG 7	8	8
M 16			PG 9	5	1
			PG 11	3	1
M 20			PG 13,5	3	1
			PG 16	3	1
M 25			PG 21	2	
M 32			PG 29	2	
M 40			PG 36		
M 50			PG 42		
M 63			PG 48		

**PK 083**



Maximum number of cable glands per enclosure side					
C	A		A/B/C/D		
	B	D			
			PG 7	13	2
M 16			PG 9	8	1
			PG 11	6	1
M 20			PG 13,5	5	1
			PG 16	4	1
M 25			PG 21	3	
M 32			PG 29		
M 40			PG 36		
M 50			PG 42		
M 63			PG 48		

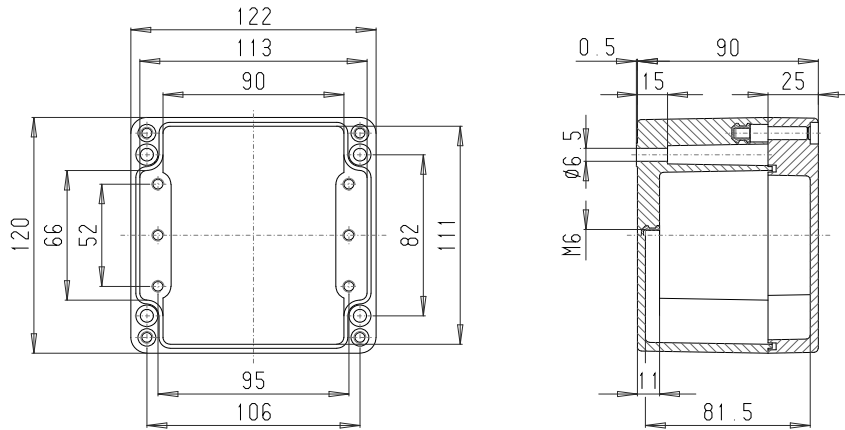
### PK 084



Maximum number of cable glands per enclosure side

A C □ D B	A/B/C/D		
	PG 7	16	2
M 16	PG 9	10	1
	PG 11	7	1
M 20	PG 13,5	6	1
	PG 16	5	1
M 25	PG 21	4	
M 32	PG 29		
M 40	PG 36		
M 50	PG 42		
M 63	PG 48		

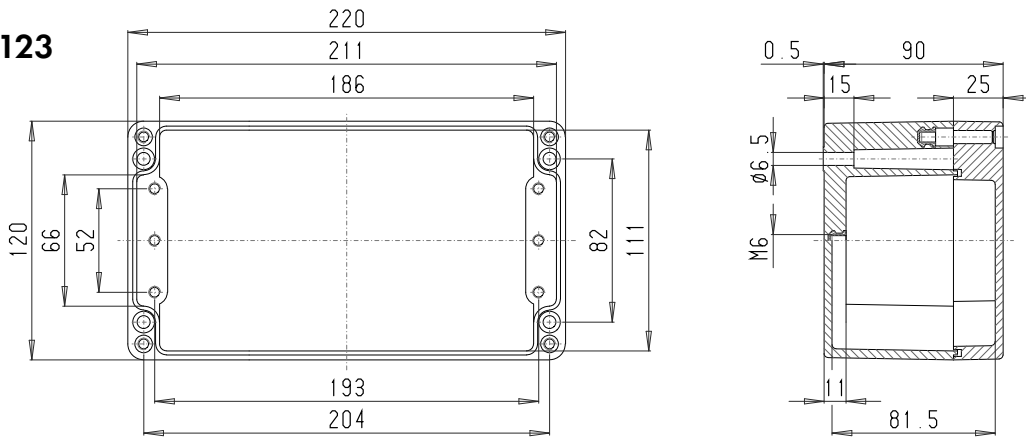
### PK 121



Maximum number of cable glands per enclosure side

A C □ D B	A/B/C/D		
	PG 7	12	8
M 16	PG 9	8	6
	PG 11	8	4
M 20	PG 13,5	6	4
	PG 16	6	3
M 25	PG 21	2	2
M 32	PG 29	2	1
M 40	PG 36	1	
M 50	PG 42		
M 63	PG 48		

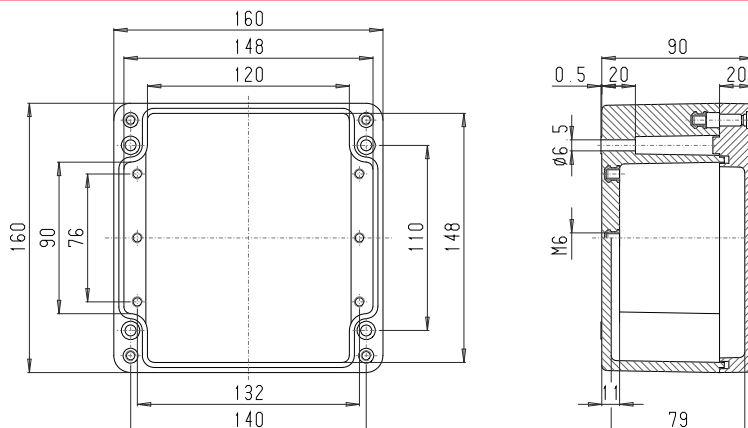
### PK 123



Maximum number of cable glands per enclosure side

A C □ D B	A/B/C/D		
	PG 7	27	8
M 16	PG 9	20	6
	PG 11	16	4
M 20	PG 13,5	14	4
	PG 16	12	3
M 25	PG 21	5	2
M 32	PG 29	3	1
M 40	PG 36	3	1
M 50	PG 42		
M 63	PG 48		

### PK 161



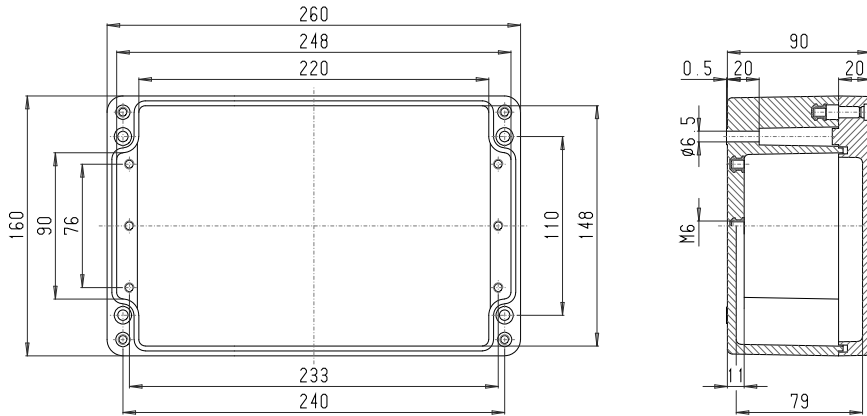
Maximum number of cable glands per enclosure side

A C □ D B	A/B/C/D		
	PG 7	18	12
M 16	PG 9	15	8
	PG 11	10	8
M 20	PG 13,5	10	6
	PG 16	8	6
M 25	PG 21	4	2
M 32	PG 29	2	2
M 40	PG 36	2	1
M 50	PG 42	1	
M 63	PG 48		

# ROLEC Attachment and mounting dimensions

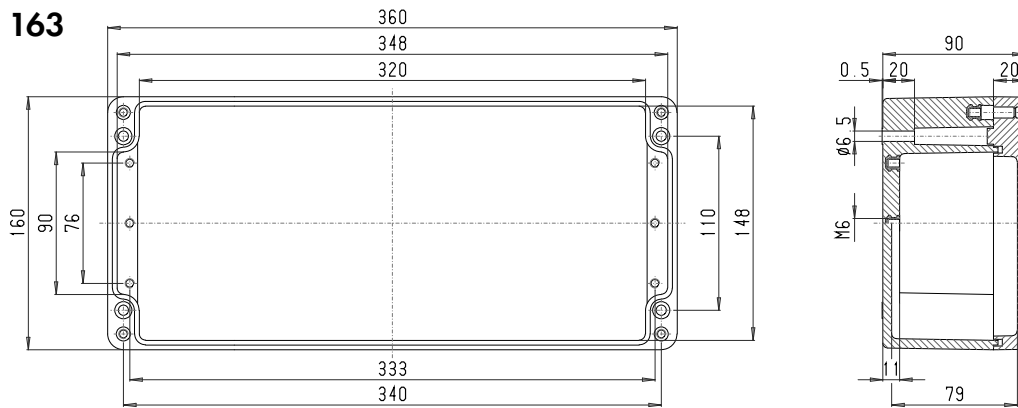
## polyKOM

**PK 162**



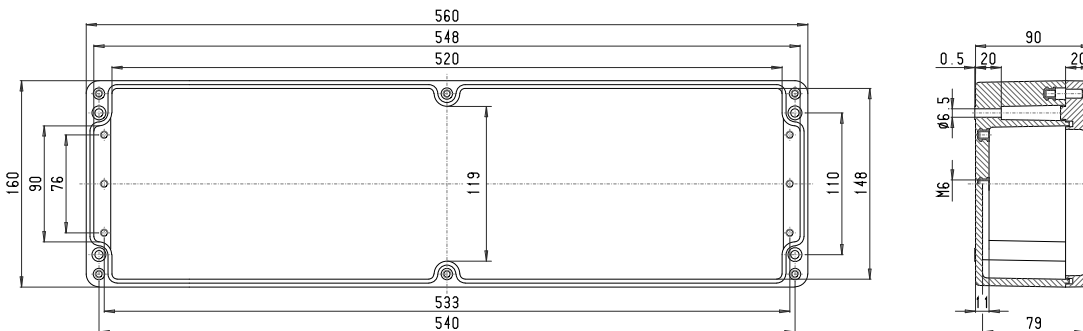
Maximum number of cable glands per enclosure side			
A	B	C/D	A/B/C/D
		PG 7	36 12
M 16		PG 9	30 8
		PG 11	18 8
M 20		PG 13,5	18 6
		PG 16	14 6
M 25		PG 21	7 2
M 32		PG 29	4 1
M 40		PG 36	3 1
M 50		PG 42	3
M 63		PG 48	

**PK 163**



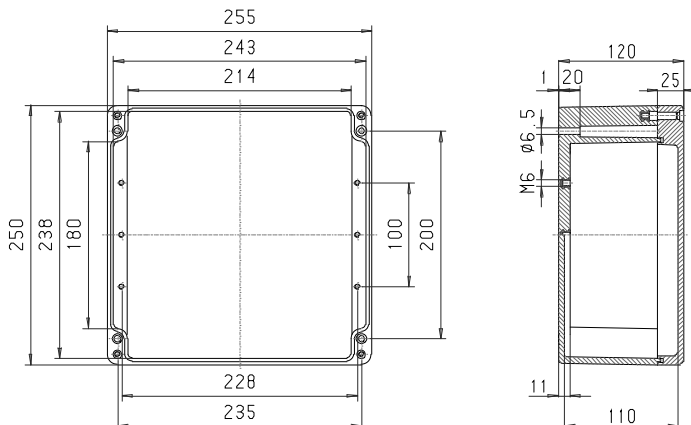
Maximum number of cable glands per enclosure side			
A	B	C/D	A/B/C/D
		PG 7	51 12
M 16		PG 9	42 8
		PG 11	28 8
M 20		PG 13,5	26 6
		PG 16	20 6
M 25		PG 21	11 2
M 32		PG 29	6 2
M 40		PG 36	5 1
M 50		PG 42	4
M 63		PG 48	

**PK 164**



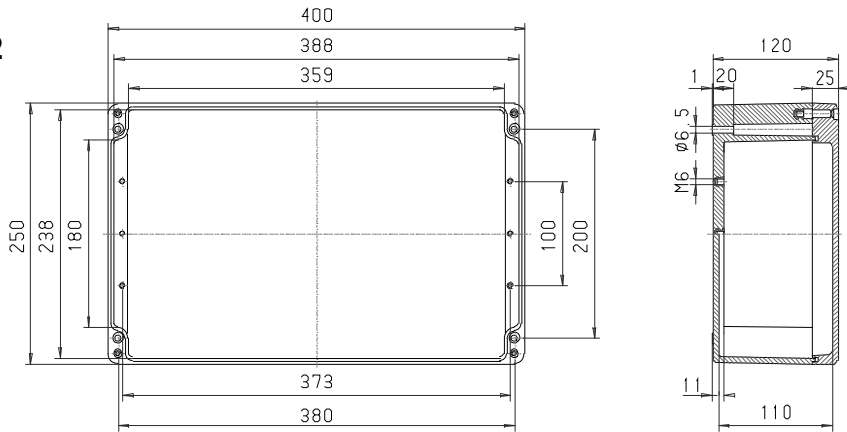
Maximum number of cable glands per enclosure side			
A	B	C/D	A/B/C/D
		PG 7	89 12
M 16		PG 9	66 8
		PG 11	44 8
M 20		PG 13,5	40 6
		PG 16	32 6
M 25		PG 21	16 2
M 32		PG 29	10 2
M 40		PG 36	8 1
M 50		PG 42	6
M 63		PG 48	

**PK 251**



Maximum number of cable glands per enclosure side			
A	B	C/D	A/B/C/D
		PG 7	48 40
M 16		PG 9	40 27
		PG 11	27 21
M 20		PG 13,5	24 21
		PG 16	14 12
M 25		PG 21	10 8
M 32		PG 29	7 5
M 40		PG 36	4 3
M 50		PG 42	3 2
M 63		PG 48	3 2

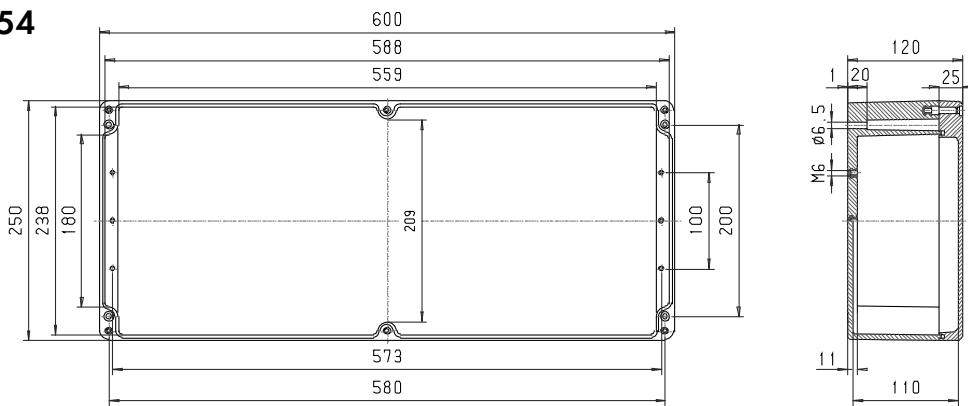
### PK 252



Maximum number of cable glands per enclosure side

C	A		A/B C/D	
	B	D		
			<b>PG 7</b>	<b>84 36</b>
<b>M 16</b>			<b>PG 9</b>	<b>64 27</b>
			<b>PG 11</b>	<b>48 21</b>
<b>M 20</b>			<b>PG 13,5</b>	<b>42 18</b>
			<b>PG 16</b>	<b>26 12</b>
<b>M 25</b>			<b>PG 21</b>	<b>18 8</b>
<b>M 32</b>			<b>PG 29</b>	<b>12 5</b>
<b>M 40</b>			<b>PG 36</b>	<b>6 3</b>
<b>M 50</b>			<b>PG 42</b>	<b>5 2</b>
<b>M 63</b>			<b>PG 48</b>	<b>5 2</b>

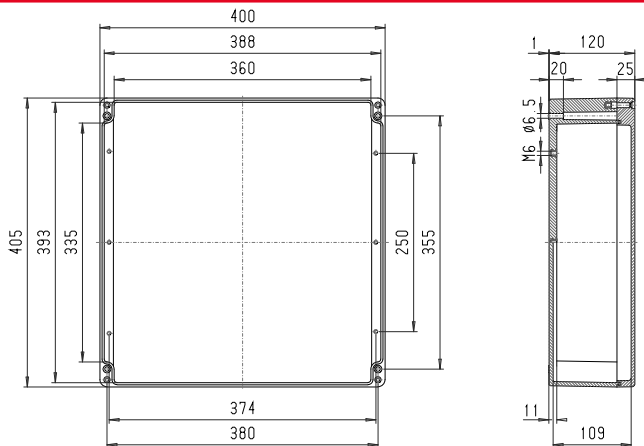
### PK 254



Maximum number of cable glands per enclosure side

C	A		A/B C/D	
	B	D		
			<b>PG 7</b>	<b>120 36</b>
<b>M 16</b>			<b>PG 9</b>	<b>96 27</b>
			<b>PG 11</b>	<b>72 21</b>
<b>M 20</b>			<b>PG 13,5</b>	<b>66 18</b>
			<b>PG 16</b>	<b>36 12</b>
<b>M 25</b>			<b>PG 21</b>	<b>28 8</b>
<b>M 32</b>			<b>PG 29</b>	<b>18 5</b>
<b>M 40</b>			<b>PG 36</b>	<b>10 3</b>
<b>M 50</b>			<b>PG 42</b>	<b>8 2</b>
<b>M 63</b>			<b>PG 48</b>	<b>6 2</b>

### PK 411



Maximum number of cable glands per enclosure side

C	A		A/B C/D	
	B	D		
			<b>PG 7</b>	<b>84 72</b>
<b>M 16</b>			<b>PG 9</b>	<b>64 51</b>
			<b>PG 11</b>	<b>48 42</b>
<b>M 20</b>			<b>PG 13,5</b>	<b>42 36</b>
			<b>PG 16</b>	<b>26 24</b>
<b>M 25</b>			<b>PG 21</b>	<b>18 16</b>
<b>M 32</b>			<b>PG 29</b>	<b>12 9</b>
<b>M 40</b>			<b>PG 36</b>	<b>6 6</b>
<b>M 50</b>			<b>PG 42</b>	<b>5 5</b>
<b>M 63</b>			<b>PG 48</b>	<b>5 4</b>

