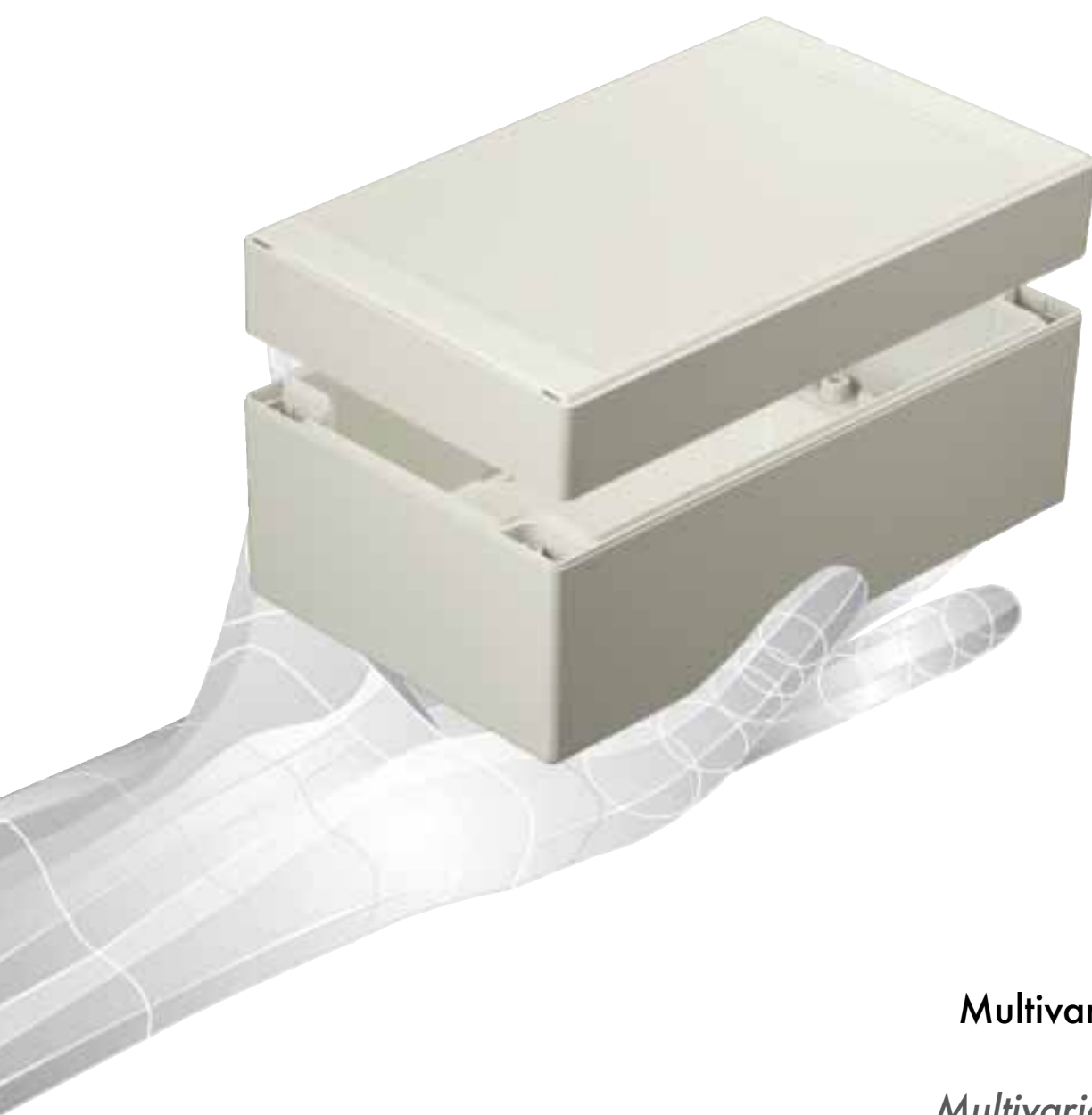


technoCASE



**Multivariable Gehäuse
aus ABS**

*Multivariable enclosures
made of ABS*

**Multivariabele behuizingen
van ABS**

Besonderes Design durch verdeckte Deckelschrauben

Funktionelles und reichhaltiges Zubehörangebot

Deckel und Unterteil können nach Bedarf getauscht werden

Gehäuse als Einbau-, Aufbau- und Hutschienenmontage möglich

Standard ABS. Polycarbonat und mit Klarsichtdeckel auf Anfrage

Special design through hidden lid screws

Wide range of functional accessories

Lid and bottom can be exchanged if desired

Enclosure as insert, add-on and top hat rail mounting available

Standard ABS. Polycarbonate and with transparent lid on request

Speciaal design door verdoken dekselschroeven

Functionele en grote keuze aan toebehoren

Deksel en onderste gedeelte kunnen indien nodig onderling worden verwisseld

Montage van de behuizing als inbouw, opbouw of op rail

3 Behuizingsvarianten leverbaar van ABS; polycarbonaat en met transparant deksel op aanvraag

TECHNISCHE DATEN

technoCASE

Gehäuse:
ABS -40°C bis +80°C halogenfrei oder Polycarbonat -50°C bis +120°C halogenfrei, auf Anfrage. Entformungsschräge 1° → Lichte Innenmaße reduzieren sich bis zum Gehäuseboden um 1° umlaufend.

Schrauben
Deckelschrauben aus Edelstahl 1.4567, unverlierbar.

Schutzart
IP 66 / EN 60529

Oberflächenwiderstand
ABS 4 x 10¹⁴ Ohm
Polycarbonat 10¹⁵ Ohm

Brennverhalten
HB - UL 94

Isolierung:
Vollständig isoliert nach VDE 0100.

Dichtung
Silikon-Dichtung (-40°C bis +120°C).

Oberfläche
Lichtgrau, ähnlich RAL 7035
Sonderwerkstoffe auf Anfrage.

Befestigung
Separate Schraubenkanäle außerhalb des Dichtraumes. Diverse Befestigungsmöglichkeiten siehe Zubehör.

Einbauten
Eine Vielzahl von Befestigungspunkten für selbstformende Schrauben sind sowohl im Gehäuseunterteil und Deckel vorhanden.

TECHNICAL DATA

technoCASE

Enclosure:
ABS -40°C up to +80°C halogen free or Polycarbonate -50°C up to +120°C halogen free, on request. 1° mould slope for casting ejection → Internal measures diminishing circulatory towards enclosure bottom by 1°.

Lid-screws
Captive screws made of stainless steel 1.4567, non-loosable.

Ingress protection
IP 66 / EN 60529

Surface resistance
ABS 4 x 10¹⁴ Ohm
Polycarbonate 10¹⁵ Ohm

Combustion behaviour
HB - UL 94

Insulation
Fully insulated VDE 0100.

Gasket
Designed gasket, made of silicon (-40°C up to +120°C).

Colour
Light grey, similar to RAL 7035
Special material on request.

Fastening
Separate screw channels outside the enclosure interior. For additional options refer to accessories.

Internal mounting
There are many mounting points for self-grooving fasteners available within the enclosure bottom, as well as in the lid.

TECHNISCHE GEGEVENS

technoCASE

Behuizing:
ABS -40°C tot +80°C vrij van halogenen of polycarbonaat -50°C tot +120°C vrij van halogenen, op aanvraag. Afschuining 1° → binnenwerkse maten reduceren zich rondom tot de behuizingsbodem met 1°.

Dekselbouten
Dekselbouten van roestvrij staal 1.4567, niet verliesbaar.

Beschermklasse
IP 66 / EN 60529

Oppervlakteresistentie
ABS 4 x 10¹⁴ ohm
Polycarbonaat 10¹⁵ ohm

Brandgedrag
HB - UL 94

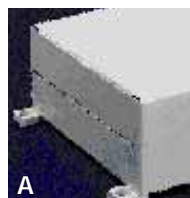
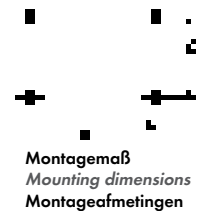
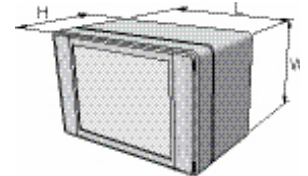
Isolatie
Volledig geïsoleerd volgens VDE 0100.

Afdichting
Afdichting van silicone (-40°C tot +120°C).

Kleur
Lichtgrijs, vergelijkbaar met RAL 7035.
Speciale kleuren op aanvraag.

Bevestiging
Afzonderlijke schroefkanalen buiten de afgedichte ruimte. Diverse bevestigingsmogelijkheden zie toebehoren.

Inbouw
Talrijke bevestigingspunten voor zelfsnijdende schroeven zijn zowel in het onderste gedeelte van de behuizing aanwezig als in het deksel.





Lieferübersicht - Range overview - Overzichtstabel leveringen

	M	Montageplatten Mounting plates Montageplaten
	T	Tragschienen für Reihen- klemmen Supporting rail for series terminals Draagrail voor serieklemmen
	F	Frontplatte selbstklebend Front plate self-adhesive Frontplaat zelfklevend
	L	Leiterkartenhalter P.C.B. support for cards Printplathouder
	IS	Verdeckte Innenscharniere Internal hinges Verdoken binnenscharnier
	S	Scharniere Hinges Scharnieren
	C	Farbige Abdeckstreifen Coloured coverstrips Kleurige afdekstroken
	P	Plombiersatz Sealing set Plombeerset
	A	Außenbefestigungsclipsen External mounting brackets Buitenbevestigingsstrippen
	SF	Schnappfüße Snapfeet Snapvoeten
	TF	Tischfüße Feet Voeten
	EMV	Abschirmung Shielding Afscherming

Type	MAT-NR.	L	W	H	D	E	g											
TA 080	201.080.000	80	80	80	66	66	192	●	●	●	●	●	●	●	●	●	●	●
TA 082	201.082.000	120	80	80	106	66	240	●	●	●	●	●	●	●	●	●	●	●
TA 084	201.084.000	160	80	80	146	66	286	●	●	●	●	●	●	●	●	●	●	●
TA 086	201.086.000	240	80	80	226	66	386	●	●	●	●	●	●	●	●	●	●	●
TA 120	201.120.000	120	120	90	106	106	348	●	●	●	●	●	●	●	●	●	●	●
TA 122	201.122.000	200	120	90	186	106	484	●	●	●	●	●	●	●	●	●	●	●
TA 124	201.124.000	240	120	90	226	106	530	●	●	●	●	●	●	●	●	●	●	●
TA 160	201.160.000	160	160	90	146	146	474	●	●	●	●	●	●	●	●	●	●	●
TA 162	201.162.000	240	160	90	226	146	620	●	●	●	●	●	●	●	●	●	●	●
TAH 162	202.162.000	240	160	120	226	146	795	●	●	●	●	●	●	●	●	●	●	●
TA 202	201.202.000	300	200	120	286	186	1.120	●	●	●	○	●	○	●	●	○	●	●
TAH 202	202.202.000	300	200	160	286	186	1.290	●	●	●	○	●	○	●	●	○	●	●
TA 242	201.242.000	360	240	120	346	226	1.500	●	●	●	○	●	○	●	●	○	●	●
TAH 242	202.242.000	360	240	160	346	226	1.730	●	●	●	○	●	○	●	●	○	●	●
TAF 080	200.080.000	80	80	60	66	66	156	●	●	●	●	●	●	●	●	●	●	●
TAF 082	200.082.000	120	80	60	106	66	196	●	●	●	●	●	●	●	●	●	●	●
TAF 084	200.084.000	160	80	60	146	66	234	●	●	●	●	●	●	●	●	●	●	●
TAF 086	200.086.000	240	80	60	226	66	320	●	●	●	●	●	●	●	●	●	●	●
TAF 120	200.120.000	120	120	60	106	106	272	●	●	●	●	●	●	●	●	●	●	●
TAF 122	200.122.000	200	120	60	186	106	398	●	●	●	●	●	●	●	●	●	●	●
TAF 124	200.124.000	240	120	60	226	106	434	●	●	●	●	●	●	●	●	●	●	●
TAF 160	200.160.000	160	160	60	146	146	394	●	●	●	●	●	●	●	●	●	●	●
TAF 162	200.162.000	240	160	60	226	146	534	●	●	●	●	●	●	●	●	●	●	●
TAF 202	200.202.000	300	200	80	286	186	950	●	●	●	○	●	○	●	●	○	●	●
TAF 242	200.242.000	360	240	80	346	226	1.270	●	●	●	○	●	○	●	●	○	●	●

* auf Anfrage - on request - op aanvraag

Standard/Standard/Standaard

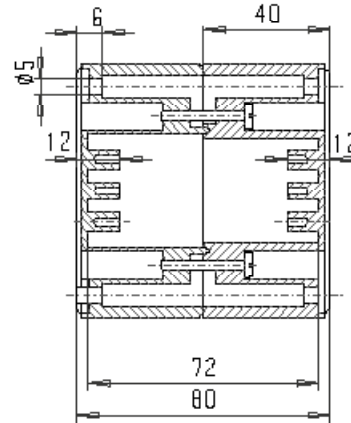
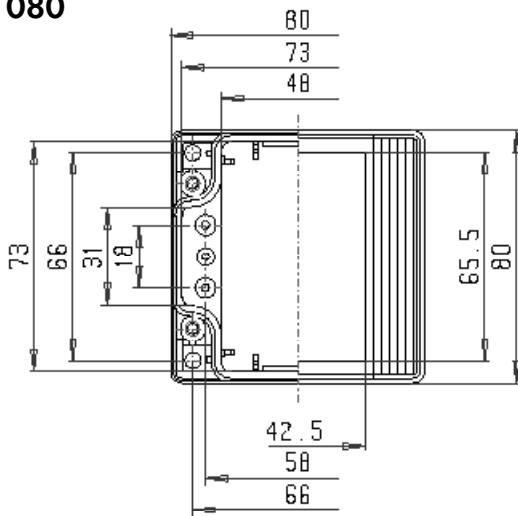
Lieferbar/available/leverbaar

Nicht lieferbar/not available/niet leverbaar

BESTELLBEISPIEL
ORDER EXAMPLE/BESTELVOORBEELD

Type: TA 084 + M + A etc.

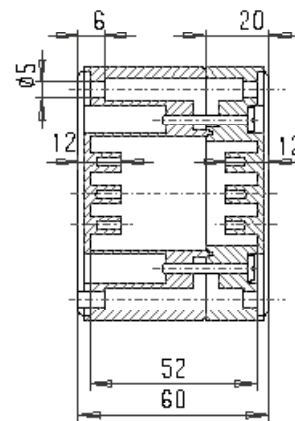
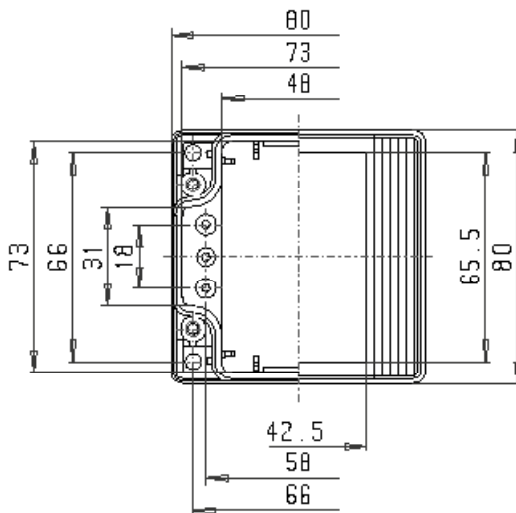
TA 080



M Kabelverschraubungen
a Cable glands
x Kabelwartel

A C B D		A/B	C/D
	PG 7	4	2
M 16	PG 9	3	1
	PG 11	2	1
M 20	PG 13,5	2	1
	PG 16	1	1
M 25	PG 21	1	
M 32	PG 29		
M 40	PG 36		
M 50	PG 42		
M 63	PG 48		

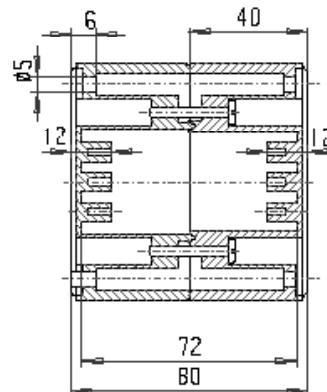
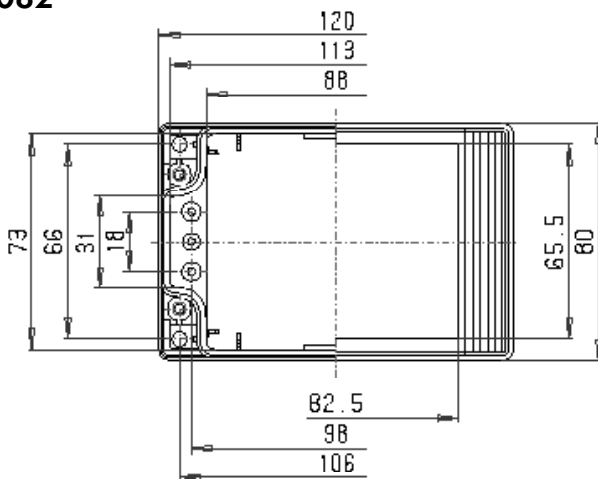
TAF 080



M Kabelverschraubungen
a Cable glands
x Kabelwartel

A C B D		A/B	C/D
	PG 7	4	2
M 16	PG 9	3	1
	PG 11	2	1
M 20	PG 13,5	2	1
	PG 16	1	1
M 25	PG 21	1	
M 32	PG 29		
M 40	PG 36		
M 50	PG 42		
M 63	PG 48		

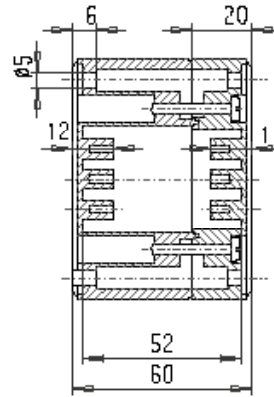
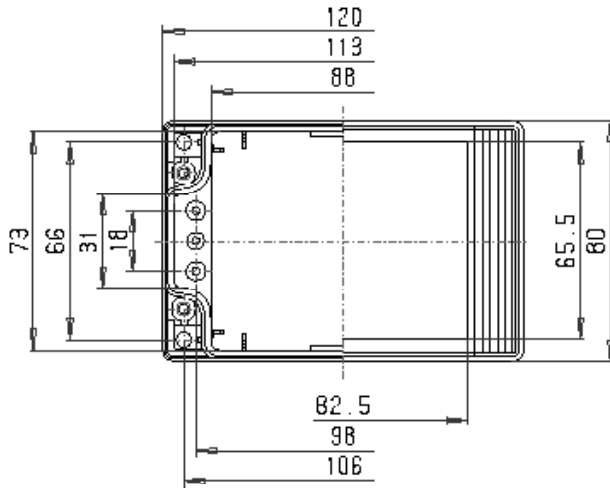
TA 082



M Kabelverschraubungen
a Cable glands
x Kabelwartel

A C B D		A/B	C/D
	PG 7	10	2
M 16	PG 9	6	1
	PG 11	3	1
M 20	PG 13,5	3	1
	PG 16	3	1
M 25	PG 21	2	
M 32	PG 29		
M 40	PG 36		
M 50	PG 42		
M 63	PG 48		

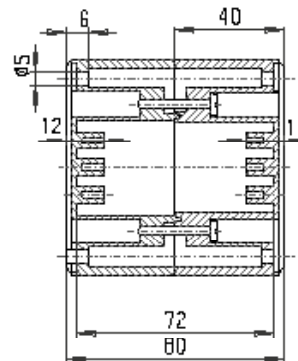
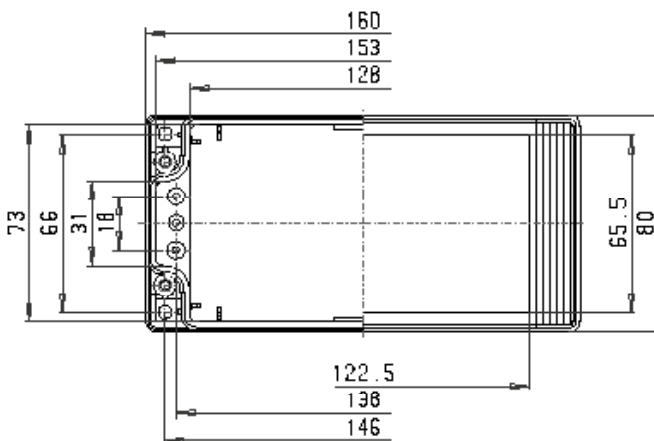
TAF 082



M Kabelverschraubungen
a Cable glands
x Kabelwartel

A		A/B/C/D	
C	D		
B	PG 7	10	2
M 16	PG 9	6	1
	PG 11	3	1
M 20	PG 13,5	3	1
	PG 16	3	1
M 25	PG 21	2	
M 32	PG 29		
M 40	PG 36		
M 50	PG 42		
M 63	PG 48		

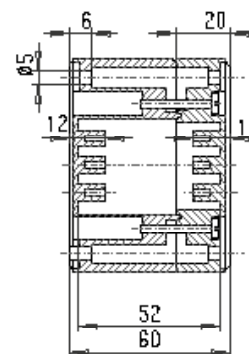
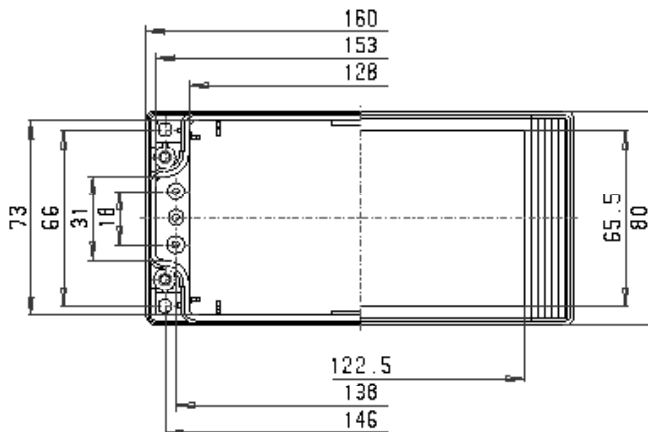
TA 084



M Kabelverschraubungen
a Cable glands
x Kabelwartel

A		A/B/C/D	
C	D		
B	PG 7	14	2
M 16	PG 9	9	1
	PG 11	5	1
M 20	PG 13,5	4	1
	PG 16	4	1
M 25	PG 21	3	
M 32	PG 29		
M 40	PG 36		
M 50	PG 42		
M 63	PG 48		

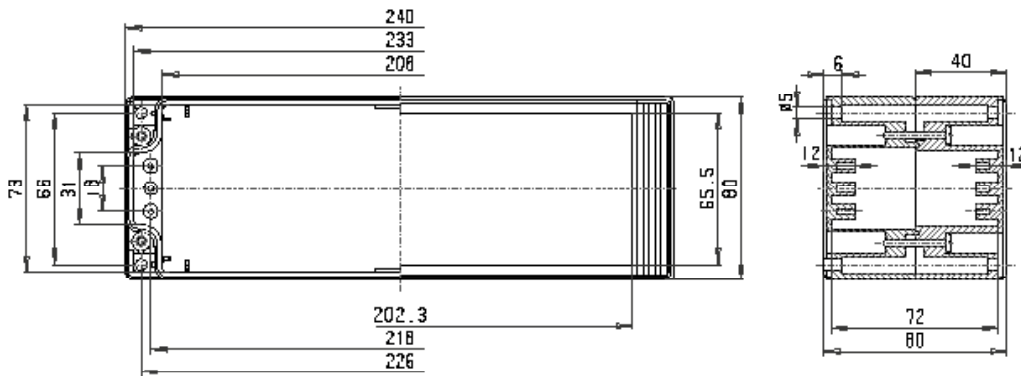
TAF 084



M Kabelverschraubungen
a Cable glands
x Kabelwartel

A		A/B/C/D	
C	D		
B	PG 7	14	2
M 16	PG 9	9	1
	PG 11	5	1
M 20	PG 13,5	4	1
	PG 16	4	1
M 25	PG 21	3	
M 32	PG 29		
M 40	PG 36		
M 50	PG 42		
M 63	PG 48		

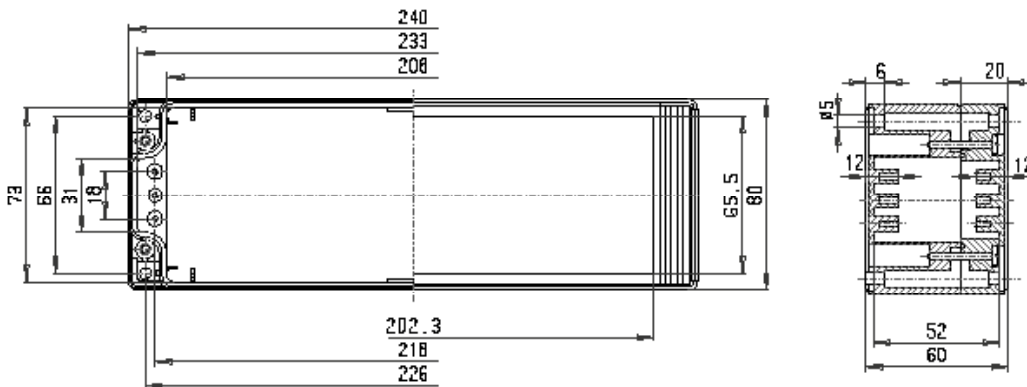
TA 086



M Kabelverschraubungen
a Cable glands
x Kabelwartel

C	A		A/B	C/D
	B	D		
	PG 7		22	2
M 16	PG 9		15	1
	PG 11		8	1
M 20	PG 13,5		7	1
	PG 16		6	1
M 25	PG 21		5	
M 32	PG 29			
M 40	PG 36			
M 50	PG 42			
M 63	PG 48			

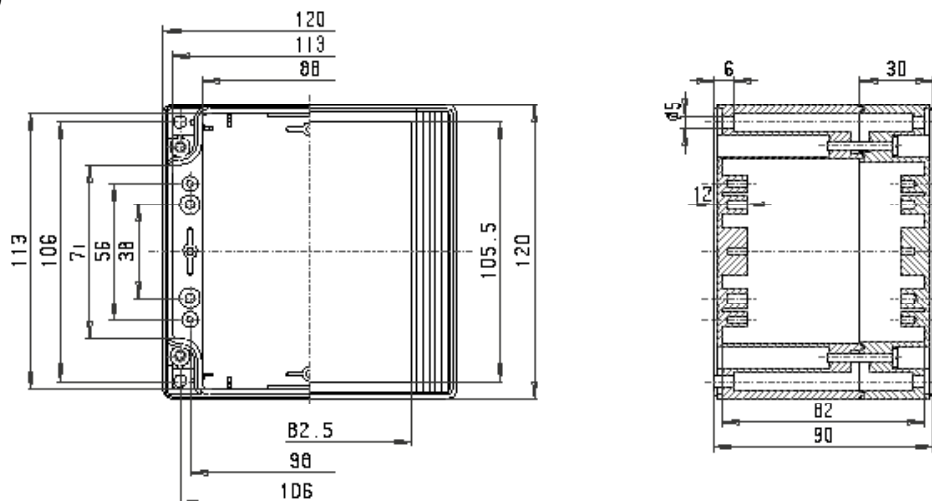
TAF 086



M Kabelverschraubungen
a Cable glands
x Kabelwartel

C	A		A/B	C/D
	B	D		
	PG 7		22	2
M 16	PG 9		15	1
	PG 11		8	1
M 20	PG 13,5		7	1
	PG 16		6	1
M 25	PG 21		5	
M 32	PG 29			
M 40	PG 36			
M 50	PG 42			
M 63	PG 48			

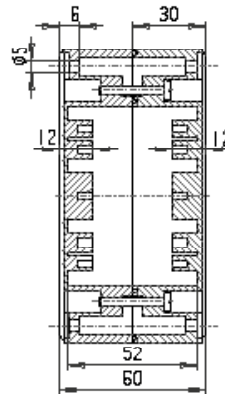
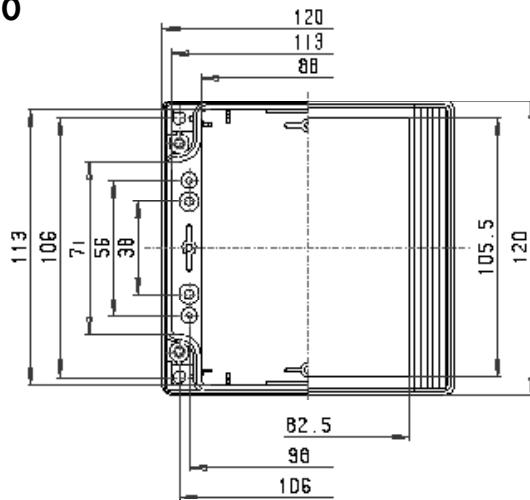
TA 120



M Kabelverschraubungen
a Cable glands
x Kabelwartel

C	A		A/B	C/D
	B	D		
	PG 7		12	11
M 16	PG 9		8	6
	PG 11		6	4
M 20	PG 13,5		5	3
	PG 16		4	3
M 25	PG 21		2	2
M 32	PG 29		2	1
M 40	PG 36		1	1
M 50	PG 42			
M 63	PG 48			

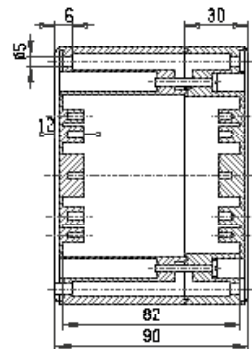
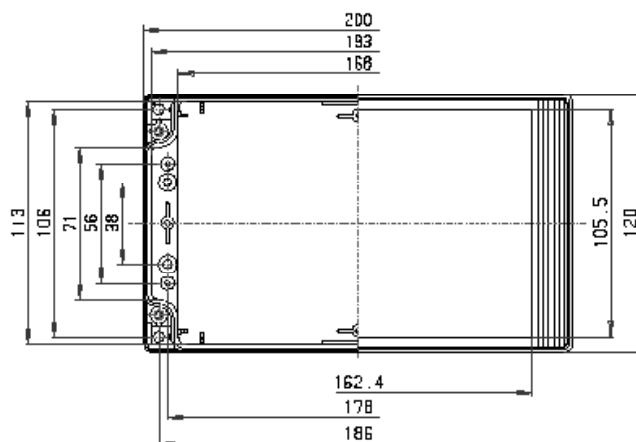
TAF 120



M Kabelverschraubungen
a Cable glands
x Kabelwartel

A		A/B/C/D	
C	D	A/B	C/D
M 16	PG 7	5	4
	PG 9	4	3
	PG 11	2	
M 20	PG 13,5	2	
	PG 16	2	
M 25	PG 21		
M 32	PG 29		
M 40	PG 36		
M 50	PG 42		
M 63	PG 48		

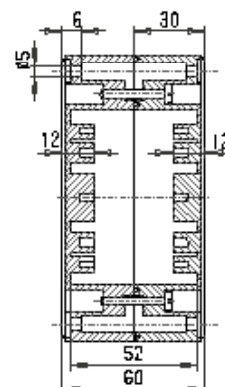
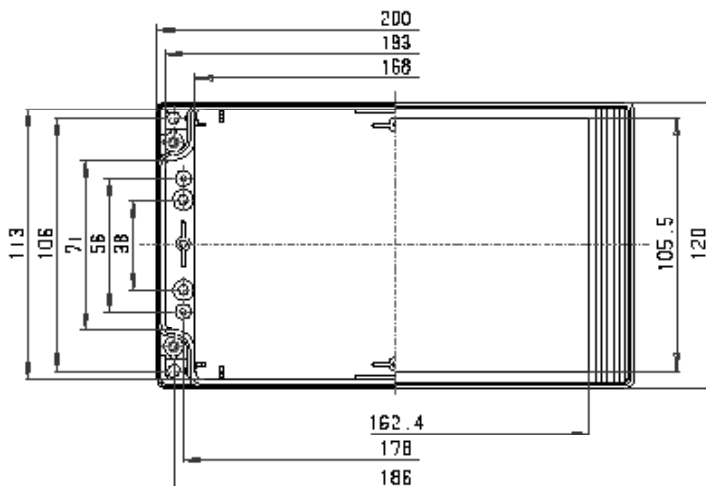
TA 122



M Kabelverschraubungen
a Cable glands
x Kabelwartel

A		A/B/C/D	
C	D	A/B	C/D
M 16	PG 7	26	11
	PG 9	16	6
	PG 11	12	4
M 20	PG 13,5	12	3
	PG 16	9	3
M 25	PG 21	4	2
M 32	PG 29	3	1
M 40	PG 36	2	1
M 50	PG 42		
M 63	PG 48		

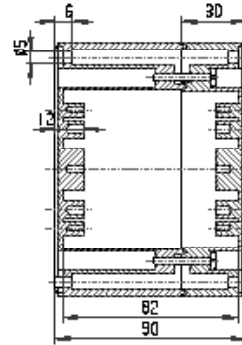
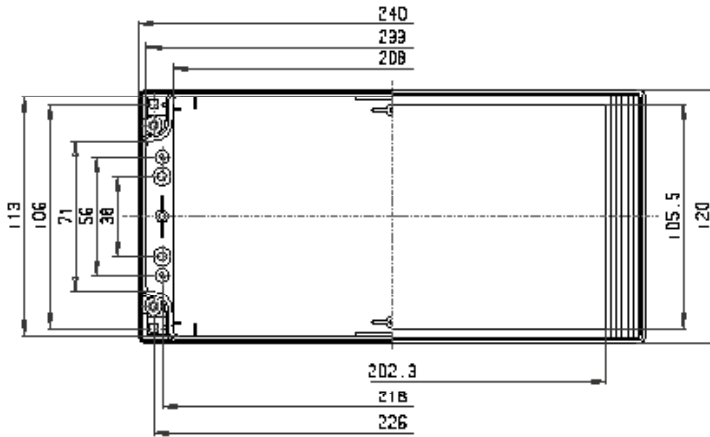
TAF 122



M Kabelverschraubungen
a Cable glands
x Kabelwartel

A		A/B/C/D	
C	D	A/B	C/D
M 16	PG 7	11	4
	PG 9	7	3
	PG 11	5	
M 20	PG 13,5	4	
	PG 16	4	
M 25	PG 21		
M 32	PG 29		
M 40	PG 36		
M 50	PG 42		
M 63	PG 48		

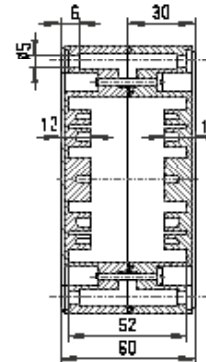
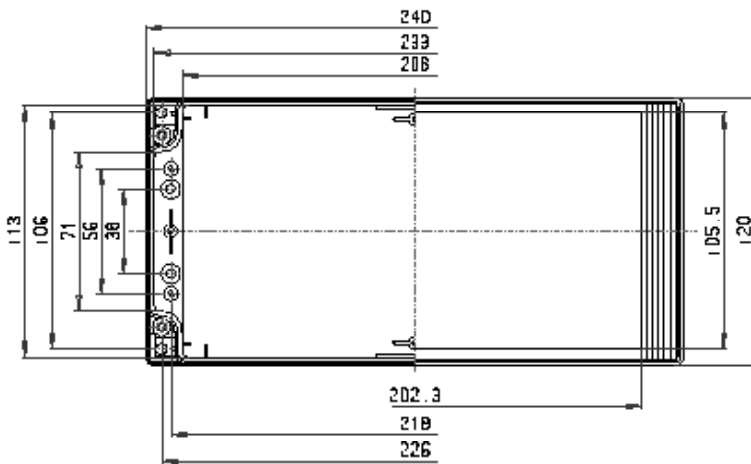
TA 124



M Kabelverschraubungen
a Cable glands
x Kabelwartel

C	A		A/B	C/D
	B	D		
			PG 7	32 11
M 16			PG 9	22 6
			PG 11	16 4
M 20			PG 13,5	13 3
			PG 16	12 3
M 25			PG 21	5 2
M 32			PG 29	4 1
M 40			PG 36	2 1
M 50			PG 42	
M 63			PG 48	

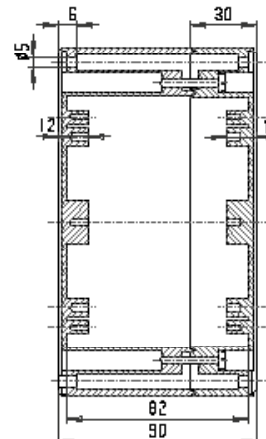
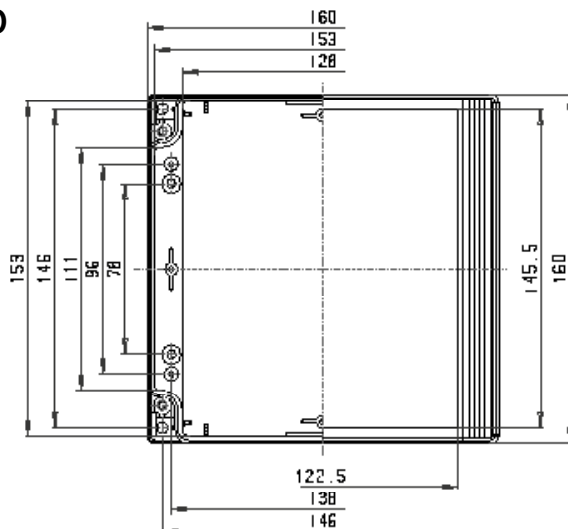
TAF 124



M Kabelverschraubungen
a Cable glands
x Kabelwartel

C	A		A/B	C/D
	B	D		
			PG 7	14 4
M 16			PG 9	9 3
			PG 11	6
M 20			PG 13,5	6
			PG 16	6
M 25			PG 21	
M 32			PG 29	
M 40			PG 36	
M 50			PG 42	
M 63			PG 48	

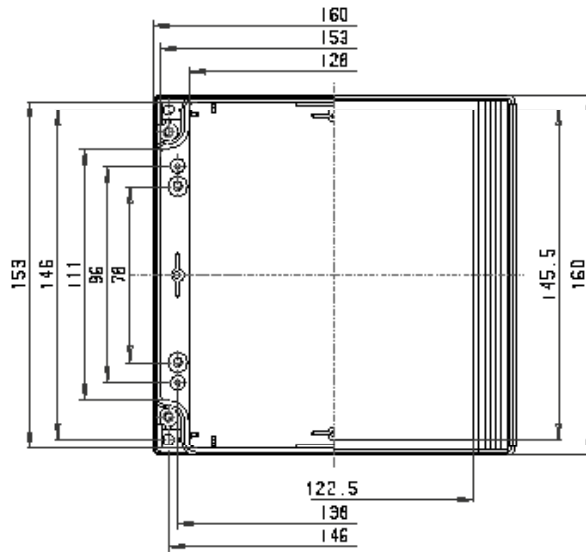
TA 160



M Kabelverschraubungen
a Cable glands
x Kabelwartel

C	A		A/B	C/D
	B	D		
			PG 7	20 17
M 16			PG 9	13 10
			PG 11	10 8
M 20			PG 13,5	8 5
			PG 16	8 5
M 25			PG 21	3 3
M 32			PG 29	2 2
M 40			PG 36	2 1
M 50			PG 42	
M 63			PG 48	

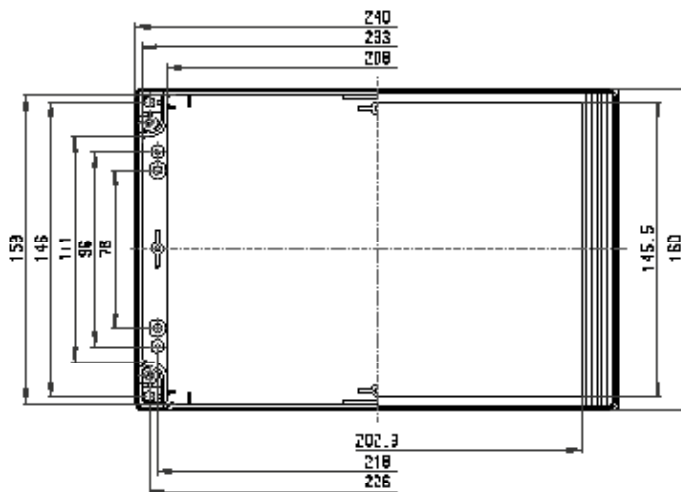
TAF 160



M Kabelverschraubungen
a Cable glands
x Kabelwartel

A		A/B	C/D
C	D		
M 16	PG 7	8	6
	PG 9	6	5
	PG 11	4	4
M 20	PG 13,5	4	2
	PG 16	4	2
M 25	PG 21		
M 32	PG 29		
M 40	PG 36		
M 50	PG 42		
M 63	PG 48		

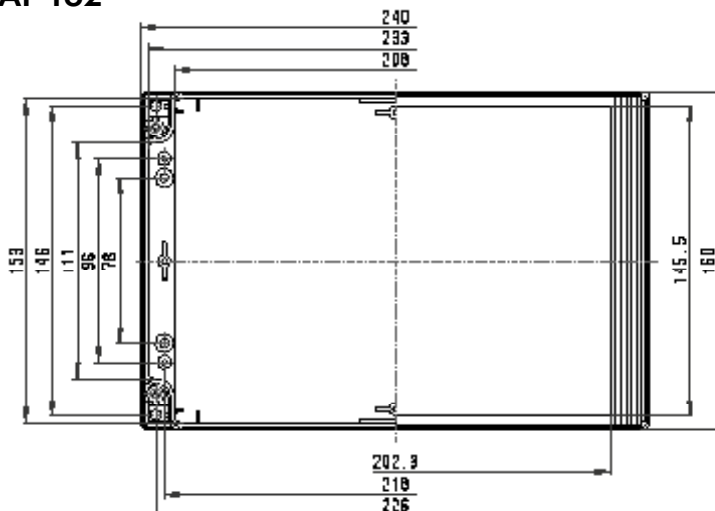
TA 162



M Kabelverschraubungen
a Cable glands
x Kabelwartel

A		A/B	C/D
C	D		
M 16	PG 7	32	17
	PG 9	19	10
	PG 11	16	8
M 20	PG 13,5	13	5
	PG 16	12	5
M 25	PG 21	5	3
M 32	PG 29	4	2
M 40	PG 36	2	1
M 50	PG 42		
M 63	PG 48		

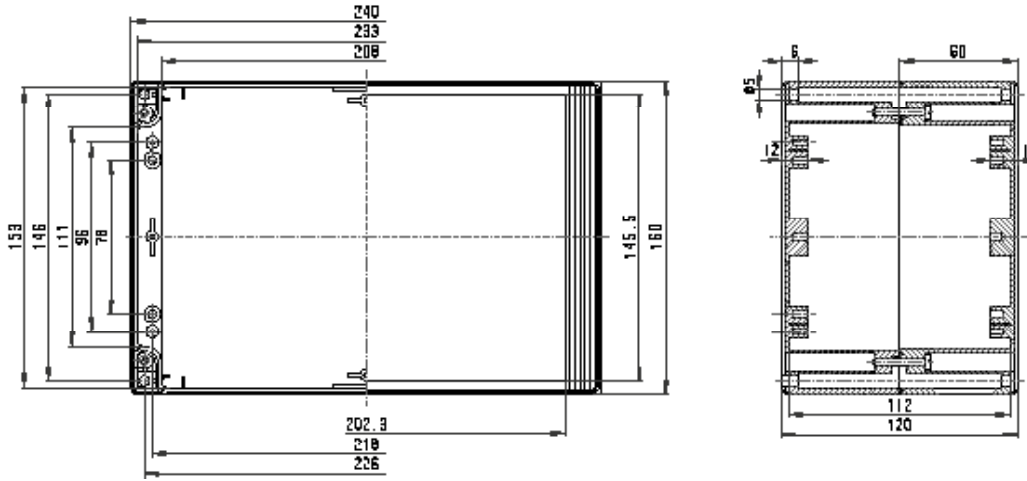
TAF 162



M Kabelverschraubungen
a Cable glands
x Kabelwartel

A		A/B	C/D
C	D		
M 16	PG 7	14	6
	PG 9	9	5
	PG 11	8	4
M 20	PG 13,5	6	2
	PG 16	6	2
M 25	PG 21		
M 32	PG 29		
M 40	PG 36		
M 50	PG 42		
M 63	PG 48		

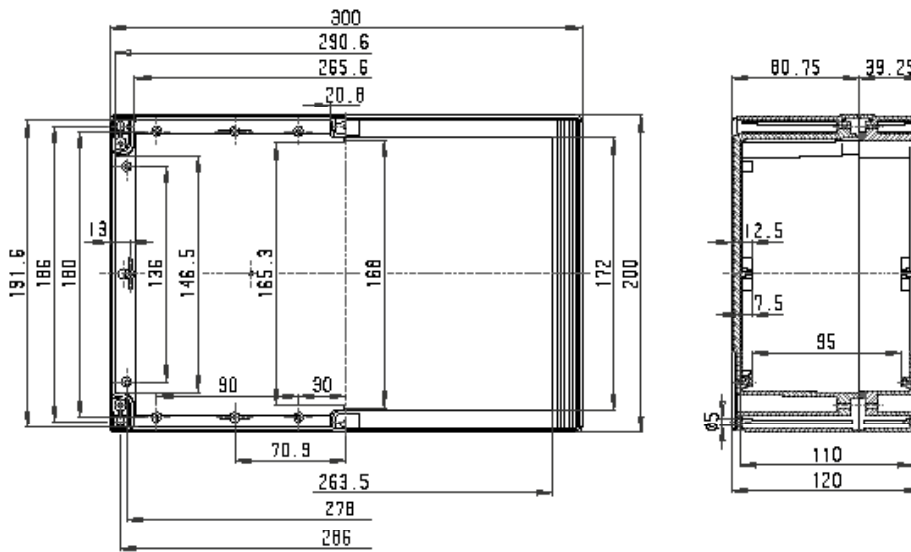
TAH 162



M Kabelverschraubungen
a Cable glands
x Kabelwartel

A		A/B	C/D
C	D		
M 16	PG 7	32	17
	PG 9	19	10
	PG 11	16	8
M 20	PG 13,5	13	5
	PG 16	12	5
M 25	PG 21	5	3
M 32	PG 29	4	2
M 40	PG 36	2	1
M 50	PG 42		
M 63	PG 48		

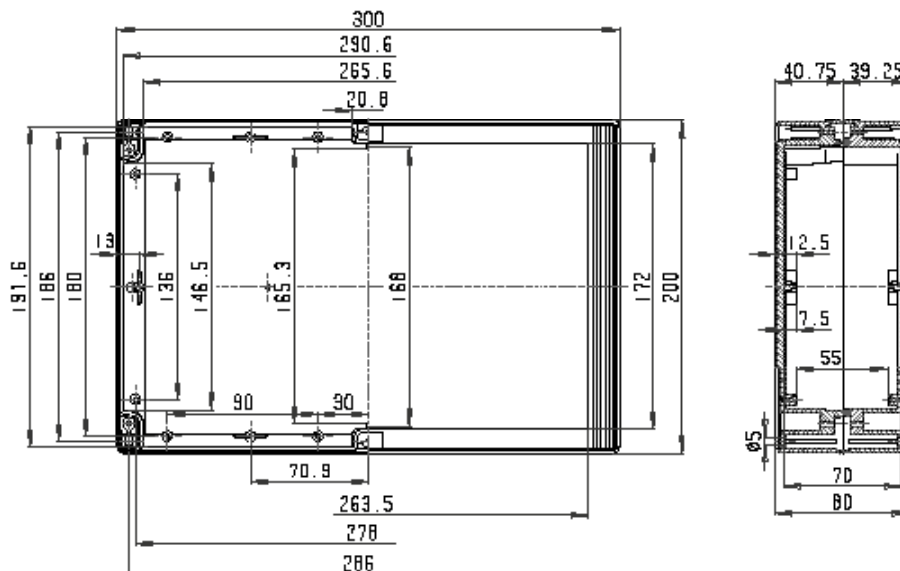
TA 202



M Kabelverschraubungen
a Cable glands
x Kabelwartel

A		A/B	C/D
C	D		
M 16	PG 7	50	30
	PG 9	33	21
	PG 11	27	12
M 20	PG 13,5	21	11
	PG 16	15	9
M 25	PG 21	6	3
M 32	PG 29	4	2
M 40	PG 36		
M 50	PG 42		
M 63	PG 48		

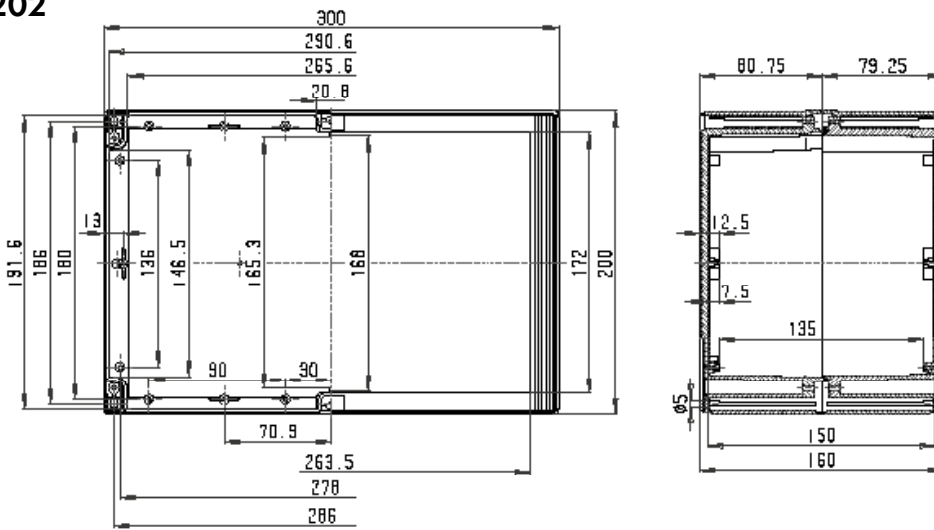
TAF 202



M Kabelverschraubungen
a Cable glands
x Kabelwartel

A		A/B	C/D
C	D		
M 16	PG 7	20	11
	PG 9	12	7
	PG 11	9	5
M 20	PG 13,5	9	5
	PG 16	7	4
M 25	PG 21	6	3
M 32	PG 29		
M 40	PG 36		
M 50	PG 42		
M 63	PG 48		

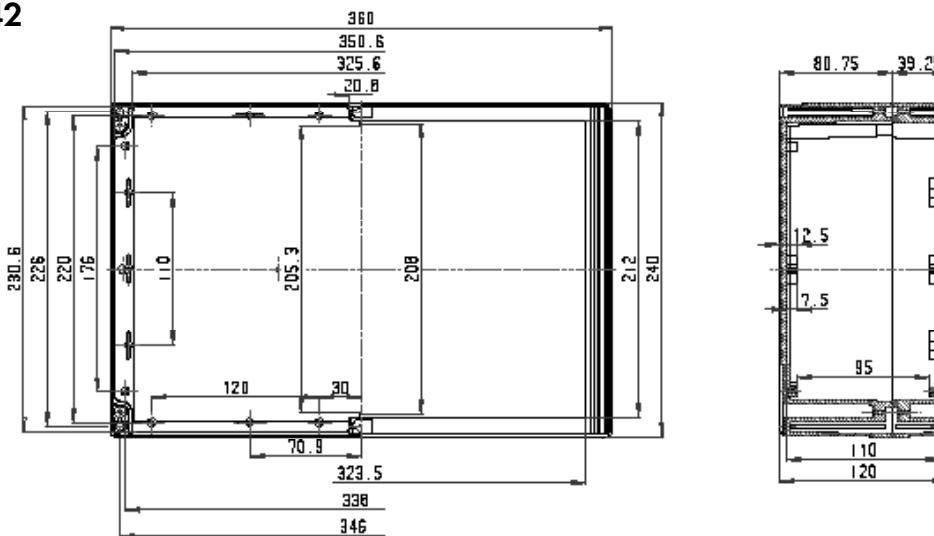
TAH 202



M Kabelverschraubungen
a Cable glands
x Kabelwartel

	A	B	C	D	A/B	C/D
	PG 7	50	30			
M 16	PG 9	33	21			
	PG 11	27	12			
M 20	PG 13,5	21	11			
	PG 16	15	9			
M 25	PG 21	6	3			
M 32	PG 29	4	2			
M 40	PG 36					
M 50	PG 42					
M 63	PG 48					

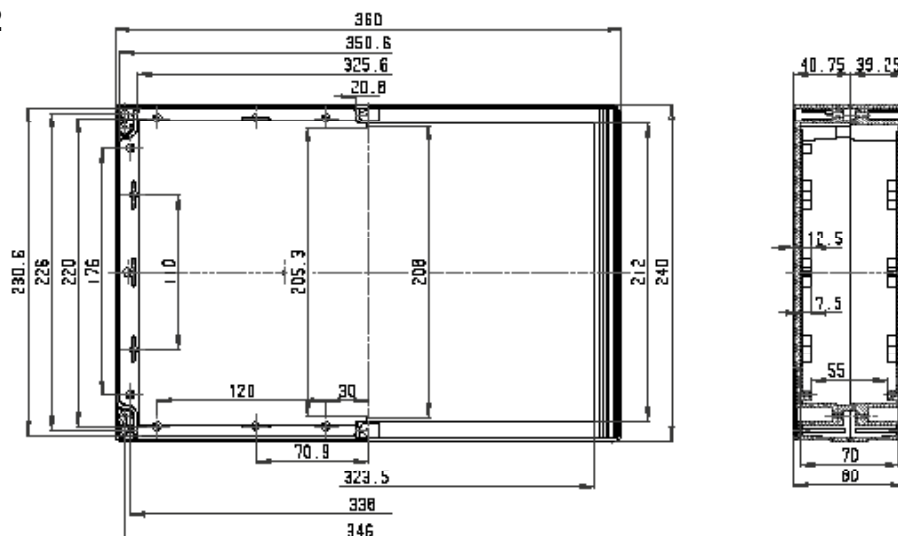
TA 242



M Kabelverschraubungen
a Cable glands
x Kabelwartel

	A	B	C	D	A/B	C/D
	PG 7	62	38			
M 16	PG 9	45	24			
	PG 11	35	17			
M 20	PG 13,5	27	14			
	PG 16	18	12			
M 25	PG 21	16	7			
M 32	PG 29	8	4			
M 40	PG 36	5	3			
M 50	PG 42					
M 63	PG 48					

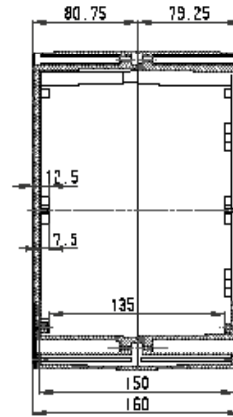
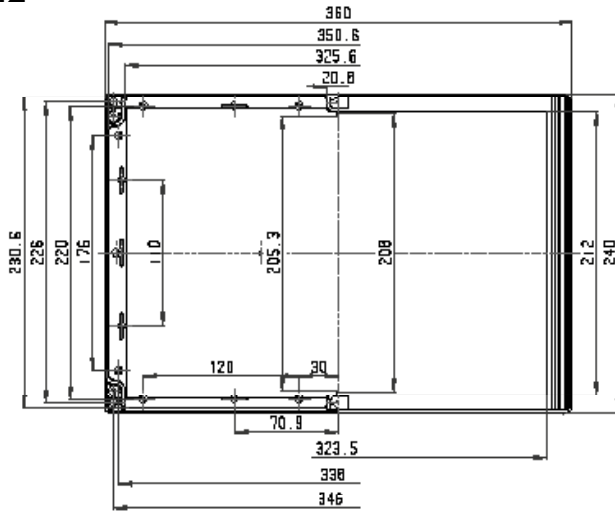
TAF 242



M Kabelverschraubungen
a Cable glands
x Kabelwartel

	A	B	C	D	A/B	C/D
	PG 7	25	15			
M 16	PG 9	15	9			
	PG 11	11	7			
M 20	PG 13,5	11	6			
	PG 16	9	5			
M 25	PG 21	8	4			
M 32	PG 29					
M 40	PG 36					
M 50	PG 42					
M 63	PG 48					

TAH 242



M Kabelverschraubungen
a Cable glands
x Kabelwartel

	A	A/B	C/D
C <input type="checkbox"/> D	PG 7	62	38
M 16	PG 9	45	24
	PG 11	35	17
M 20	PG 13,5	27	14
	PG 16	18	12
M 25	PG 21	16	7
M 32	PG 29	8	4
M 40	PG 36	5	3
M 50	PG 42		
M 63	PG 48		